

SLOUGH MULTIFUEL EXTENSION PROJECT

[PINS Ref: EN010129]

Drawings and Plans

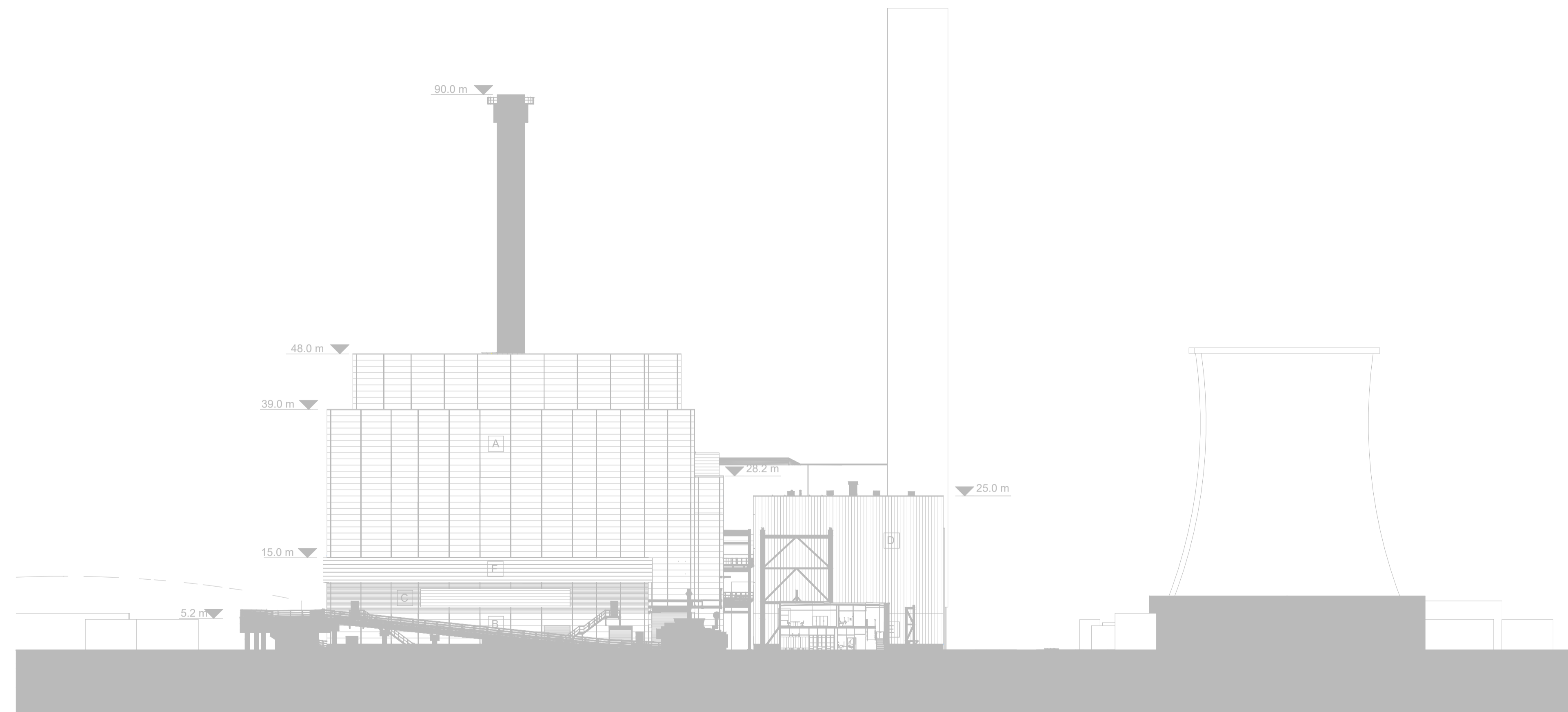
Multifuel Facility Plans

Application Document Reference: [4.4]

APFP Regulations 5(2)(o)

Revision Number: 1.0

Planning Act 2008
Infrastructure Planning (Applications: Prescribed
Forms and Procedure) Regulations 2009



East Elevation
 1 : 500 @ A1

A WALL CLADDING - TYPE A
Material : Europanel F5 Architecturally Flat Composite Panel Spanning Horizontally with Omega Flush Joint Insert and Parapet Capping Flashing
Finish : TATA Colourcoat Prisma
Colour : Oyster (RAL 7035)

B WALL CLADDING - TYPE B
Material : Europanel F5 Architecturally Flat Composite Panel Spanning Horizontally with Omega Flush Joint Insert and Parapet Capping Flashing
Finish : TATA Colourcoat Prisma
Colour : Slate Grey (RAL 7012)

C WALL CLADDING - TYPE C
Material : Europanel F5 V Groove Composite Panel Spanning Horizontally with Omega Flush Joint Insert and Parapet Capping Flashing
Finish : TATA Colourcoat Prisma
Colour : Sirius Matt (RAL 9006)

D WALL CLADDING - TYPE D
Material : Euroclad Elite 51 Reverse Profile Steel Cladding Spanning Vertically
Finish : TATA Colourcoat Prisma
Colour : Oyster (RAL 7035)

E WALL CLADDING - TYPE E
Material : Euroclad Elite 51 Reverse Profile Steel Cladding Spanning Vertically
Finish : TATA Colourcoat Prisma
Colour : Slate Grey (RAL 7012)

F FEATURE PARAPET - TYPE F
Material : Architectural Profiles Wall Profile Steel AP70LCP
Finish : TATA Colourcoat Prisma
Colour : Oyster (RAL 7035)

G DOORS - TYPE G
Material : Steel Faced Roller Shutter Door
Finish : Polyester Powder Coated (PPC)
Colour : To Match Surrounding Cladding

H ADMIN BLOCK WINDOWS & DOORS - TYPE H
Material : Aluminium Double Glazed Window System
Finish : Polyester Powder Coated (PPC) 30% Gloss
Colour : Slate Grey (RAL 7012)

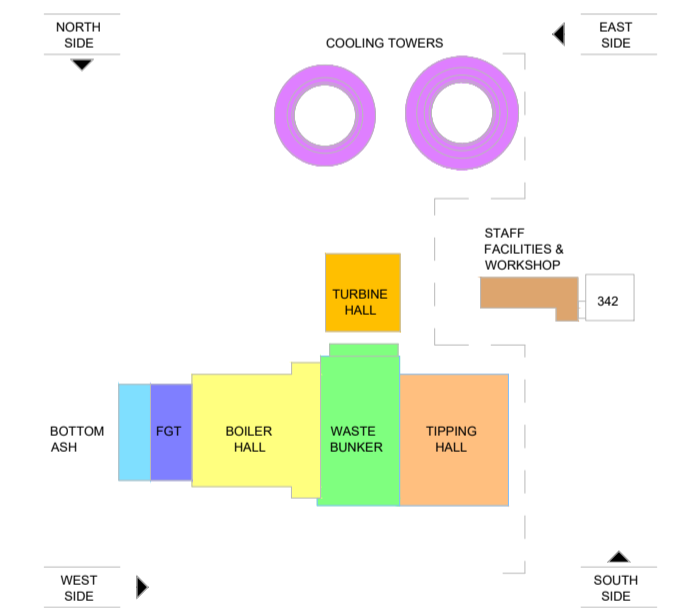
Stack cladding, main external process plant and structure to be Polyester Powder Coated (PPC) 30% Gloss Window Grey (RAL 7040)

COLOUR CHART

RAL 7035 Oyster
RAL 9006 Sirius Matt
RAL 7012 Slate Grey
RAL 7040 Window Grey



AECOM
 3rd Floor, Portwall Place
 Portwall Lane
 Bristol
 BS1 6NA
 aecom.com



KEY PLAN

NOTES

CONSENTED DEVELOPMENT PIPEWORK IS NOT SHOWN ON THIS DRAWING

ISSUE PURPOSE

4.4 Generating Station Plans
 APFP Regulation 5(2)(o)

PINS REFERENCE NO.

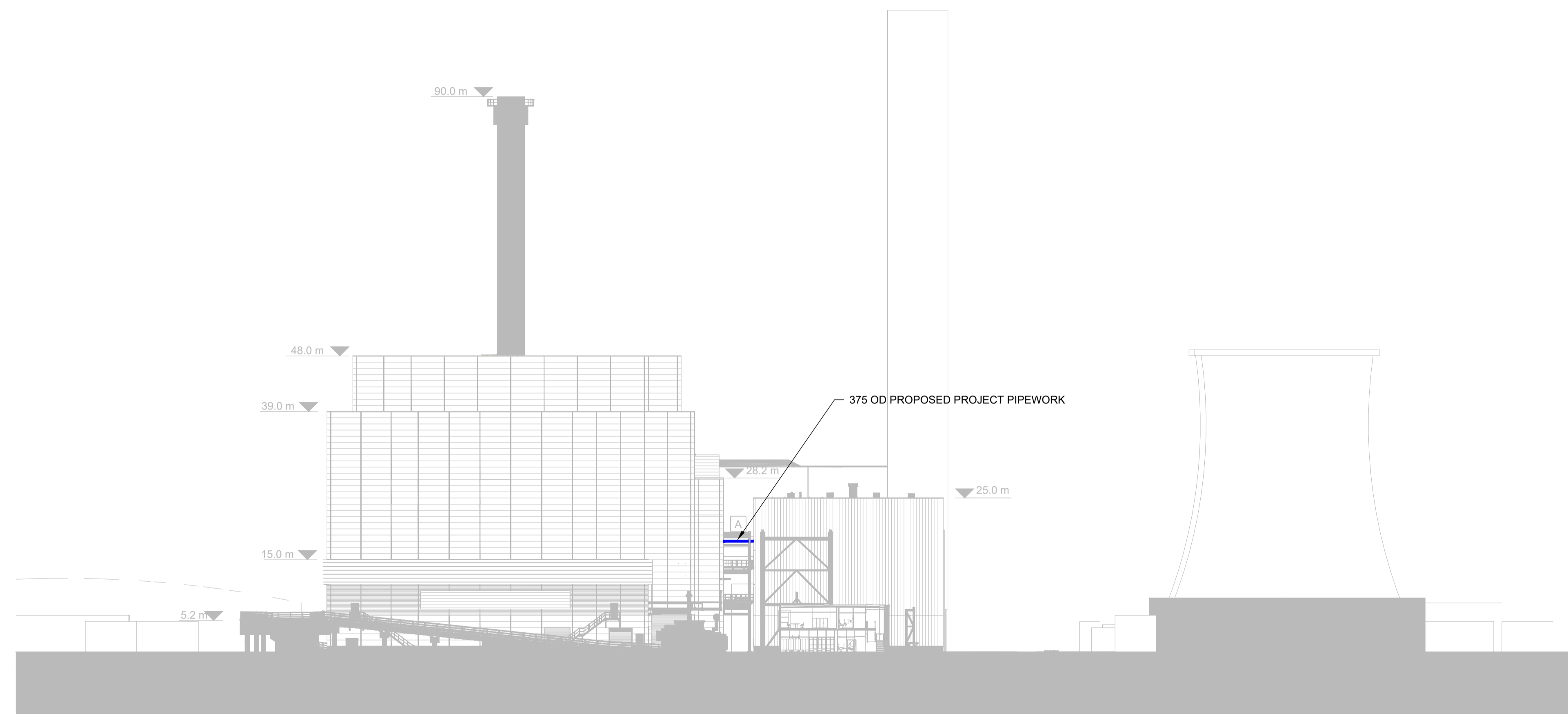
EN101129

FIGURE TITLE

CONSENTED DEVELOPMENT
 EAST ELEVATION

FIGURE NUMBER

FIGURE 4.4a



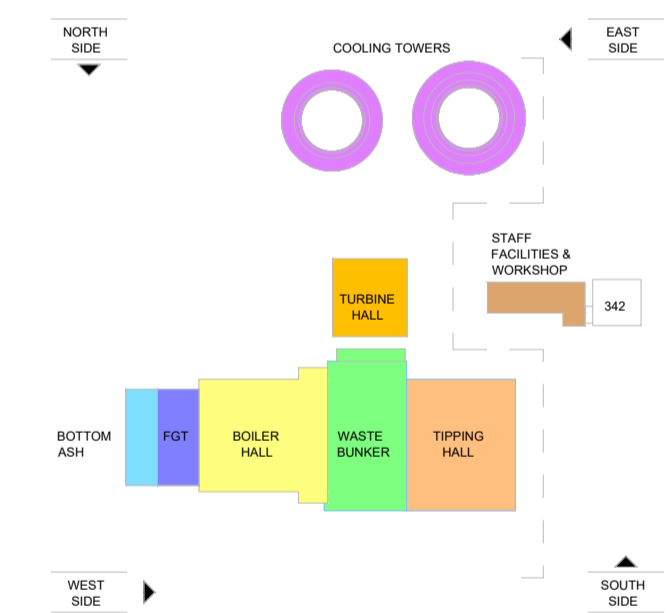
East Elevation
1 : 500 @ A1



SSE Slough Multifuel

AECOM
3rd Floor, Portwall Place
Portwall Lane
Bristol
BS1 6NA
aecom.com

- A** PROPOSED PROJECT PIPEWORK - TYPE A
 - Material : Aizunic Insulation Pipework Cladding
Flat Carbon Steel Coated on Both Sides
with an Alloy of Zinc and Aluminium
 - Finish : Zinc Aluminium Alloy
 - Colour : Equivalent to RAL 9005



KEY PLAN

THIS DRAWING SHOWS THE PROPOSED PROJECT PIPEWORK, INCLUDED TO IDENTIFY THE SCOPE OF THE EXTENSION WORKS. CONSENTED DEVELOPMENT PIPEWORK IS NOT SHOWN ON THIS DRAWING

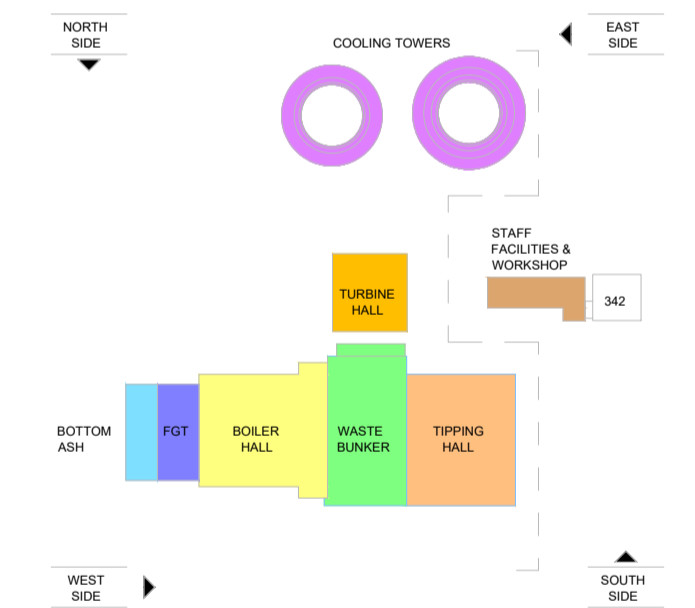
4.4 Generating Station Plans
APFP Regulation 5(2)(o)

EN010129

EAST ELEVATION OF CONSENTED DEVELOPMENT AND PROPOSED PROJECT

FIGURE 4.4b

- A** PROPOSED PROJECT PIPEWORK - TYPE A
 - Material : Alzunic Insulation Pipework Cladding
Flat Carbon Steel Coated on Both Sides with an Alloy of Zinc and Aluminium
 - Finish : Zinc Aluminium Alloy
 - Colour : Equivalent to RAL 9005



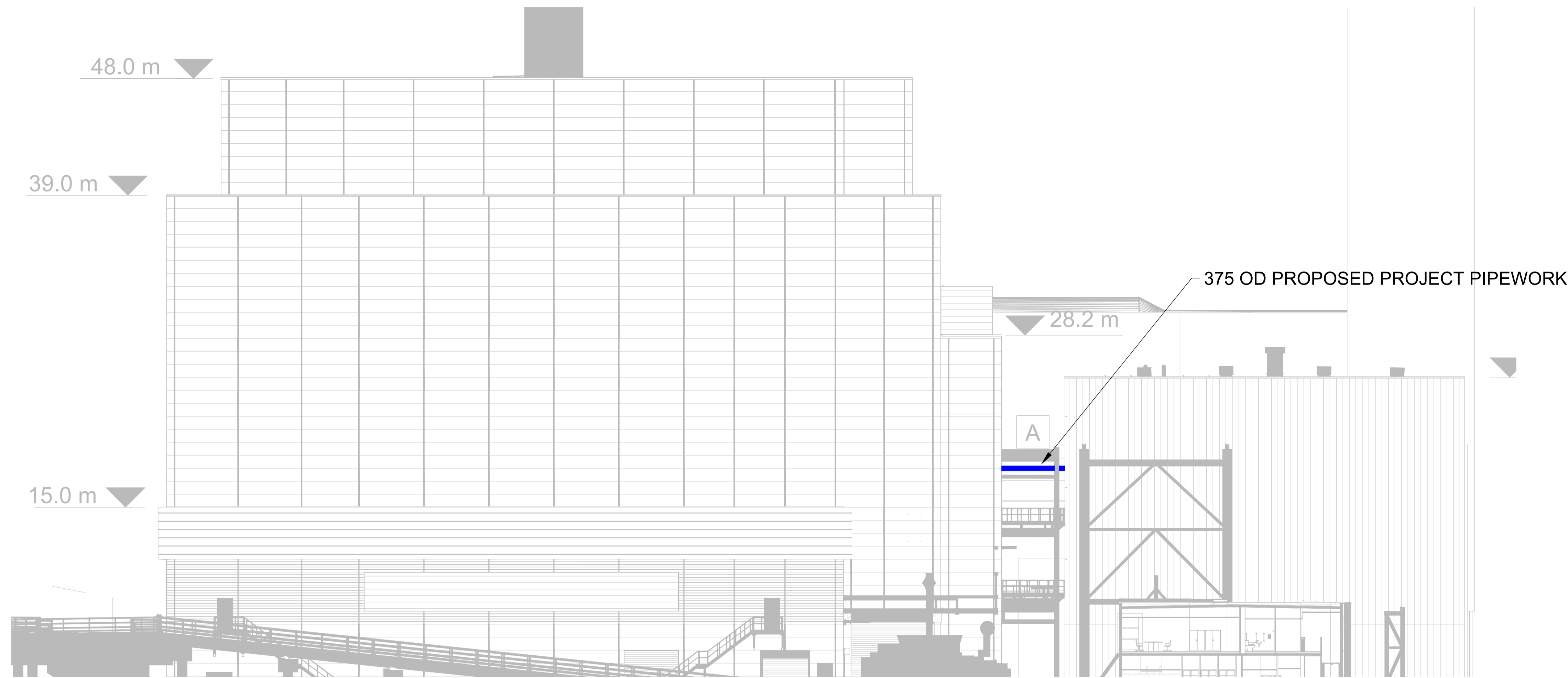
THIS DRAWING SHOWS THE PROPOSED PROJECT PIPEWORK, INCLUDED TO IDENTIFY THE SCOPE OF THE EXTENSION WORKS. CONSENTED DEVELOPMENT PIPEWORK IS NOT SHOWN ON THIS DRAWING.

4.4 Generating Station Plans
APFP Regulation 5(2)(o)

EN010129

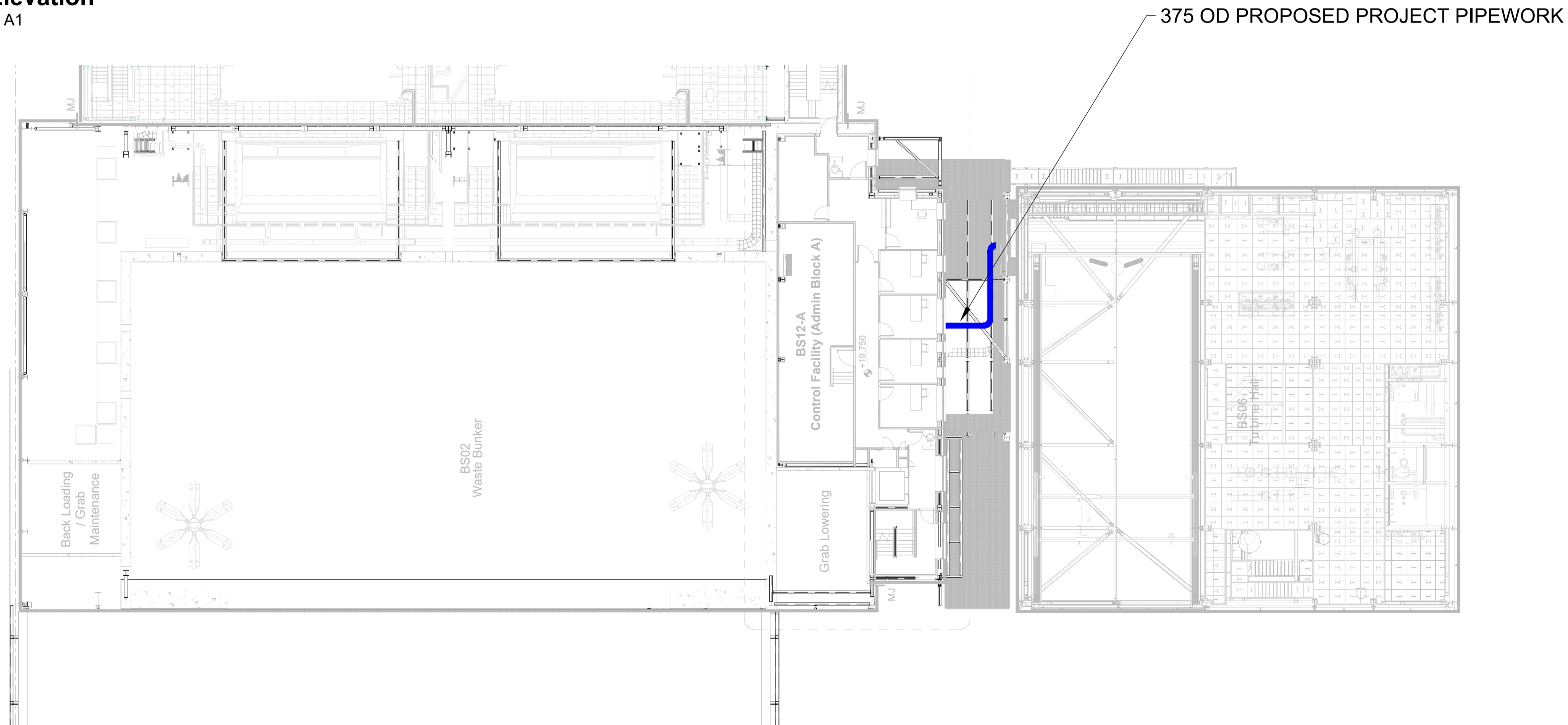
PLAN AND EAST ELEVATION OF
CONSENTED DEVELOPMENT AND
PROPOSED PROJECT

FIGURE 4.4c



East Elevation

1 : 200 @ A1



FOURTH FLOOR GA PLAN

1 : 200 @ A1